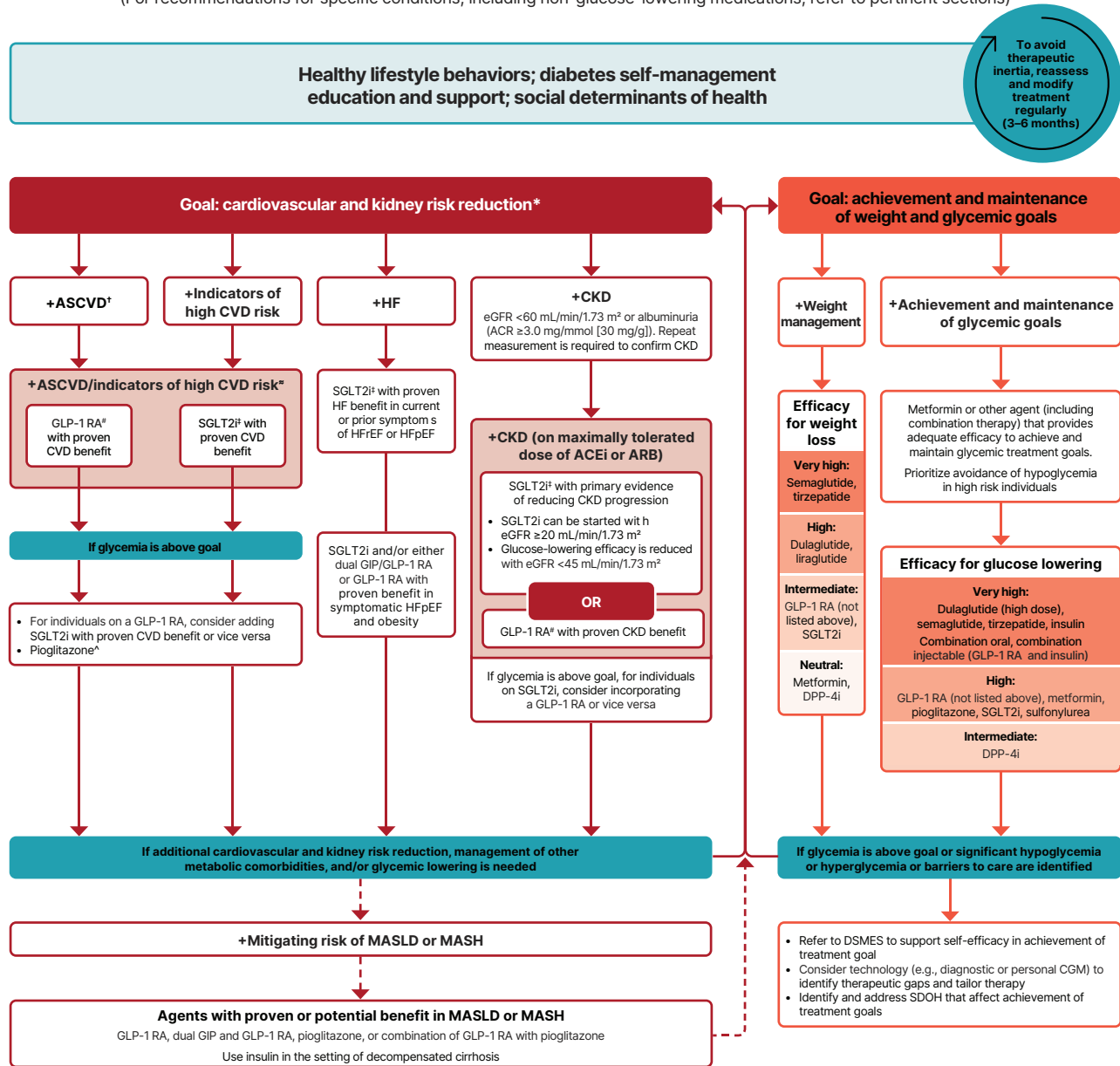


Use of glucose-lowering medications in the management of type 2 diabetes

(For recommendations for specific conditions, including non-glucose-lowering medications, refer to pertinent sections)



* In people with HF, CKD, established CVD, or multiple risk factors for CVD, the decision to use a GLP-1 RA or SGLT2i with proven benefit should be made irrespective of attainment of glycemic goal.

† ASCVD: Defined differently across CVOTs but all included individuals with established CVD (e.g., MI, stroke, and arterial revascularization procedure) and variably included conditions such as transient ischemic attack, unstable angina, amputation, and symptomatic or asymptomatic coronary artery disease. Indicators of high risk: While definitions vary, most comprise ≥55 years of age with two or more additional risk factors (including obesity, hypertension, smoking, dyslipidemia, or albuminuria).

‡ A strong recommendation is warranted for people with CVD and a weaker recommendation for those with indicators of high risk CVD. Moreover, a higher absolute risk reduction and thus lower numbers needed to treat are seen at higher levels of baseline risk and should be factored into the shared decision-making process. See text for details.

For GLP-1 RAs, CVOTs demonstrate their efficacy in reducing composite MACE, CV death, all-cause mortality, MI, stroke, and kidney end points in individuals with T2D with established or high risk of CVD. One kidney outcome trial demonstrated benefit in reducing persistent eGFR reduction and CV death for a GLP-1 RA in individuals with CKD and T2D.

‡ For SGLT2is, CV and kidney outcomes trials demonstrate their efficacy in reducing the risks of composite MACE, CV death, all-cause mortality, MI, HFrEF, and kidney outcomes in individuals with T2D and established or high risk of CVD.

^ Low-dose pioglitazone may be better tolerated and similarly effective as higher doses.

Figure 9.4—Use of glucose-lowering medications in the management of type 2 diabetes. The left side of the algorithm prioritizes mitigation of diabetes-related complications and end-organ effects, while the right side addresses weight and glucose management goals. ACEi, angiotensin-converting enzyme inhibitor; ACR, albumin-to-creatinine ratio; ARB, angiotensin receptor blocker; ASCVD, atherosclerotic cardiovascular disease; CGM, continuous glucose monitoring; CKD, chronic kidney disease; CV, cardiovascular; CVD, cardiovascular disease; CVOT, cardiovascular outcomes trial; DPP-4i, dipeptidyl peptidase 4 inhibitor; DSMES, diabetes self-management education and support; eGFR, estimated glomerular filtration rate; GLP-1 RA, glucagon-like peptide 1 receptor agonist; HF, heart failure; HFpEF, heart failure with preserved ejection fraction; HFrEF, heart failure with reduced ejection fraction; HFrEF, hospitalization for heart failure; MACE, major adverse cardiovascular events; MASH, metabolic dysfunction-associated steatohepatitis; MASLD, metabolic dysfunction-associated steatotic liver disease; MI, myocardial infarction; SDOH, social determinants of health; SGLT2i, sodium–glucose cotransporter 2 inhibitor; T2D, type 2 diabetes. Adapted from Davies et al. (90).

Downloaded from http://diabetesjournals.org/care/article-pdf/49/Supplement_1/S183/848878/4c26s009.pdf by guest on 08 June 2026